

**TUESDAY**



PHILADELPHIA TRANSPORTATION COMPANY streetcar trip will depart 8th and Chestnut at 9:30 AM, with pick up at 9th and Market at 9:45AM. This will be an all surface trip using ex-Kansas City PCC cars. Portions of Routes No. 6, 15, 36, 47, 50, 53, and 60 will be covered as well as sections of out-of-service trackage. This will be your opportunity to ride the largest streetcar system in the United States. Fare \$ 5.00 (day of trip \$ 5.50).

We sincerely regret the delay in sending out this flyer . As most of you known are plans for Montreal were upset by the failure of the selected hotel to honor our reservations after July 2nd because the Queen was coming to Expo-67. It is our hope that we will see you in Philadelphia.

TO: ELECTRIC RAILROADERS ASSOCIATION - CONVENTION  
145 Greenwich Street, N.Y., N.Y. 10006

Please send the following:

\_\_\_\_\_ tickets for Reading Trip @ \$7.00 \_\_\_\_\_  
\_\_\_\_\_ tickets for Pennsylvania Trip @ \$8.00 \_\_\_\_\_  
\_\_\_\_\_ tickets for PTC shop tour @ \$ 2.00 \_\_\_\_\_  
\_\_\_\_\_ tickets for PTC PCC Trip @ \$5.00 \_\_\_\_\_  
\_\_\_\_\_ tickets for Banquet @ \$7.50 \_\_\_\_\_

(Children under 12 when with adult on trips  
as follows - RDG & PRR @ \$4.00; PTC \$3.00)

\_\_\_\_\_ SPECIAL PACKAGE - ALL OF THE ABOVE \$25.50 \_\_\_\_\_

I WILL \_\_\_\_\_, WILL NOT \_\_\_\_\_ stay at Convention Headquarter,  
Sheraton Hotel. Please send registration and reservation  
card with tickets.

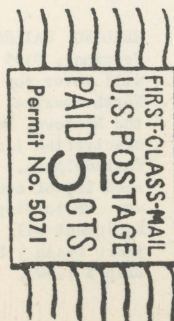
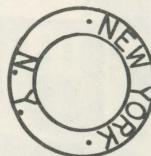
NAME \_\_\_\_\_

ADDRESS \_\_\_\_\_

CITY, STATE, ZIP \_\_\_\_\_

Please, make checks payable to the Association and enclose  
a stamped, self-addressed envelope. Thank you.

ELECTRIC RAILROADERS' ASSOCIATION, INC.  
145 GREENWICH STREET, NEW YORK, N. Y. 10006



**CONVENTION**

**JULY 1-4**

**1967 - PHILADELPHIA**





## COME TO PHILADELPHIA!

Come to Philadelphia for the Electric Railroaders Assoc. Inc. 33rd Anniversary Convention. Everything has been planned to insure a memorable week-end. This will be your opportunity to meet other members from all parts of this great country. Three electric trips are scheduled, plus an interesting movie show. A gala banquet featuring an address by Mr. Louis T. Klauder will crown the festivities. Come to Philadelphia! Bring your friends and family!!! All you need is an interest in electric railroads and you will have the weekend of your life!

## ITINERARY

FRIDAY	-June 30th-Registration, Sheraton Hotel	
SATURDAY	-July 1st-Registration, Sheraton Hotel	
	-Reading electric trip	9:45AM
	-Cocktail Hour, Sheraton Hotel	6:30PM
	-Banquet, Sheraton Hotel	8:15PM
SUNDAY	-July 2nd-Pennsylvania electric trip	9:15AM
	-Movie Show, Sheraton Hotel	7:30PM
MONDAY	-July 3rd-PTC Shop Tour	9:45AM
TUESDAY	-July 4th-PTC streetcar trip	9:30AM

## CONVENTION HEADQUARTERS

CONVENTION HEADQUARTERS - Sheraton Hotel located at 1725 J.F.Kennedy Boulevard, directly over the PRR Suburban Station. Adjacent to historic City Hall, this Hotel is within walking distance of all our trips. The very last word in modern, air-conditioned accommodations, to make your stay pleasurable is offered. Free parking with in-and-out privileges is available to guests. It is located within walking distance of all the museums and historic shrines of the City of Brotherly Love. Special to-members-only rates available at \$13.00 for singles and \$17.00 for twins. If you desire a reservation card that entitles you to these special rates please check - box on coupon.

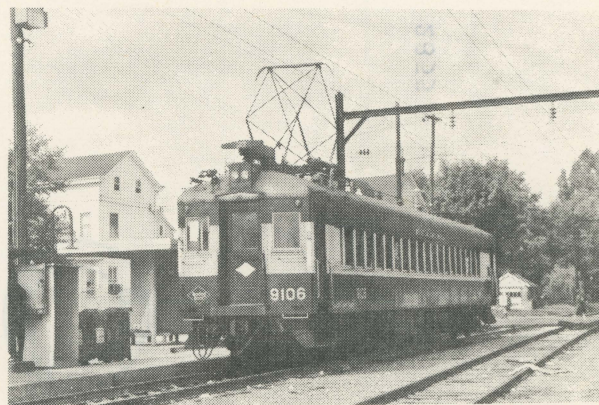
## BANQUET

CONVENTION BANQUET - Cocktail hour beginning at 6:30 PM. Drinks and other refreshments will be available from the hotel's service bar. Dinner will be at 8:15PM. A full course dinner will be served. After dinner we will hear a talk by our guest-of-honor, Mr. Louis T. Klauder.

## GUEST SPEAKER

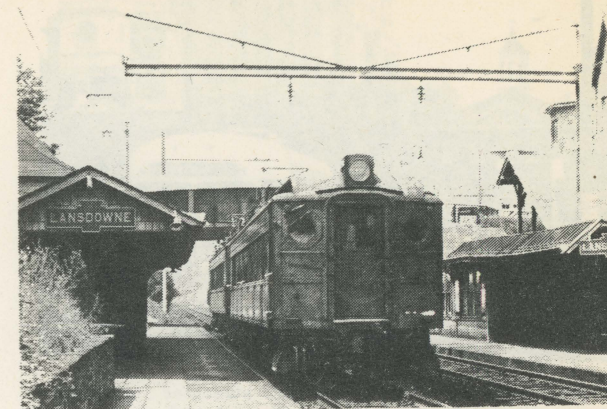
MR. LOUIS T. KLAUDER, head of the well known consulting firm, Louis T. Klauder & Associates of Philadelphia, will speak to us about some of the current projects his firm is working on. A few of the more prominent ones include the high-speed cars that will soon be in regular operation on the Pennsylvania Railroad and the new cars for the MTA sponsored Long Island Rail Road. This talk will be illustrated and Mr. Klauder plans to bring along some pictures taken on a recent trip to Europe, of the Talgo in Spain and the Mistral and Brabant in France. Mr. Klauder's talk should make this a very memorable, and exciting evening. Plan to be with us. Charge \$7.50. (evening of banquet \$8.00).

## SATURDAY



READING RAILROAD electric trip departing the Reading Terminal, 9:45 AM with pick-up at No. Broad Street. We will cover the newest electrified main line trackage in North America, the Fox Chase line. We will also cover the Newtown, West Trenton, Doylestown and Hatboro electrified lines that wind into scenic suburbs of Philadelphia. Reading Terminal with its large train shed is, of course, a delight to the railfan photographer. Photo stops and movie runs have been scheduled. Equipment will be the recently rehabilitated MU cars in their flashy blue and white paint. Fare \$7.00 (day of trip \$7.50).

## SUNDAY



PENNSYLVANIA RAILROAD electric trip departing Suburban Station 9:15 AM. We will cover the Schuylkill Branch to Manayunk, the Chestnut Hill Branch, the West Chester Branch, the main line to Paoli. The little used line to Jersey (D.R.R. & B. Co. Branch) and the normally freight-only Stadium extension and West Philadelphia - elevated line will be covered. This will be an excellent opportunity to ride the PRR electrified commuterlines as well as the freight-only branches. Photo stops and movie runs are scheduled. Equipment will be old MP-54 red MU cars. Fare \$8.00 (day of trip \$9.00).

## EXTRA! MOVIE SHOW

For your added enjoyment a movie night is scheduled. Those of you who attended last years movie show held in Chicago will remember what an excellent program was shown. An excellent opportunity to meet new friends!! Program arranged by Herman Rinke ERA #426. Time 7:30PM, in the Sheraton Hotel, Pennsylvania-West Room. There is no charge and all are welcome.

## MONDAY

PHILADELPHIA TRANSPORTATION COMPANY shop tour of the main streetcar repair facility at Courtland Shop. Group will assemble at the main entrance to the PTC building at 9:45 AM. Address is 200 W. Wyoming Avenue. Fare \$2.00 (No charge to those who purchase a Convention package).

