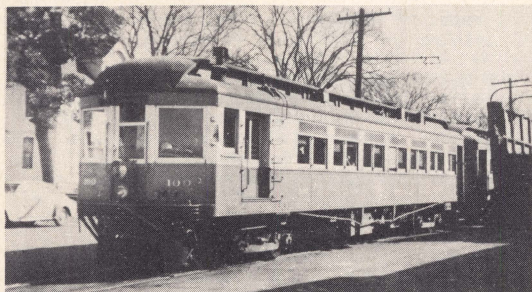
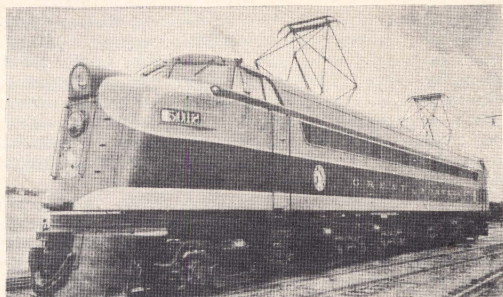


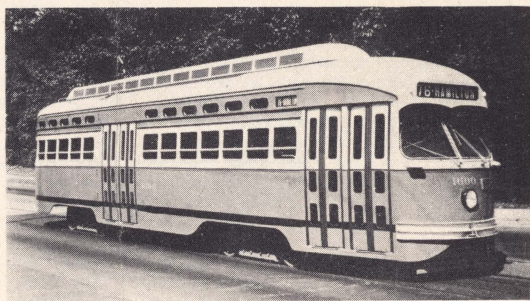
Do you like

... the growl of a big
juice jack as she bites
into the rails to start
a heavy train?



... to recall fond
memories of earlier
days of electric
traction: handsome
wooden cars, friendly
crews, intimate vistas
of pleasant scenery?

... to follow current
developments in the
electric-railway field:
equipment orders,
new rapid-transit lines,
modernization of rail
facilities?



If you do ...

...you're not the only one!

THOUSANDS of people the world over share your interest in electric railways. They may be railway executives or employees, students of transportation, historians, or just plain "fans"—but to all of them, electric railroading has a special appeal. They have their own organization ... not just nation-wide, but world-wide ... for it has members in every corner of the globe.

That organization is the Electric Railroaders' Association Inc., a non-profit group dedicated to the collection and dissemination of information on the history and operations of all kinds of electric railways, and advocating their continued improvement and progress.

ERA was founded in 1934 by a group of men who saw in the study of electric rail transportation an interesting activity and an opportunity to provide a common meeting ground for fellowship with others of similar interests.

Many ERA members specialize in the part which the electric railway has played in the history and development of our country. Other members, employed in the industry, seek to learn about electric systems far from home to compare them with their own. Still others become interested in an electric line through constant contact with it by being a daily rider.

Some view the subject from a more serious standpoint. Convinced of the superiority of the electric railway, they see this efficient means of transportation facing attack from those who wish, possibly for selfish reasons, to substitute what seems to them an inferior means of transport. They see an opportunity to work for the public good by publicizing the advantages of electric lines.

WHAT DOES ERA OFFER? As soon as he joins, a member receives a card, a certificate, a bronze lapel button, and all publications issued during the year—plus the benefit of ERA's many special services.

The monthly magazine *ERA Headlights* contains features on individual electric railway systems, with maps, rosters, history, description and pictures; specifications and photographs of all new and unusual electric-railway equipment; articles explaining the technical and management aspects of the electric-railway industry; plus the most comprehensive news coverage of electric lines to be found in any American publication. Whenever anything happens in the traction field, you're almost certain to find it in *Headlights*.

A complete index to *Headlights* is published once each year.

The feature publication *Electric Railroads*, issued several times yearly, devotes each issue to a comprehensive illustrated article on some one railway or some aspect of electric railroading.

Booklets, tickets, transfers, and other material often are distributed to members with these publications.

A membership list is issued from time to time, to enable members living in the same area to get to know each other.

An "order blank" is sent to all members, listing books, pamphlets, maps, and other electric-railway material available at reduced prices to members.

Meetings are held regularly in many of the larger cities throughout the country, with speakers from the railway field, movies, forums, and a chance to swap pictures and experiences with other members. Meeting dates and places are listed in *ERA Headlights* every month.

Field trips are run over electric railways ... often with unusual types of equipment ... affording opportunities to take pictures and to inspect shops and other facilities from which the public normally is excluded. Notices of field trips are sent to all members in the area.

At ERA's National Headquarters in Hoboken, just across the Hudson from New York City, is maintained the Frank J. Sprague Memorial Library of electric-railway literature, which members may consult by appointment. Many of the items in this library originally were in the collection of the late Frank J. Sprague, inventor of "multiple-unit" control for electric trains and builder of the nation's first successful electric street railway. Mr. Sprague was member No. 1 of ERA. The Sprague Library grows constantly as new material is added to it.

An information service is conducted from National Headquarters, by means of which any member wanting information about any subject on electric railways is given all possible assistance. If the experts at Headquarters don't know the answer, they are quite likely to know who does.

Members may have classified advertisements printed in *Headlights* without charge, a wonderful way to add to one's collection of information or memorabilia.

Members who take trips to visit electric railways may, by making appropriate arrangements through National Headquarters or area representatives, arrange to meet fellow members in their travels, who will tell them, and often show them, what to see and what not to miss.

There are ERA members in foreign lands too, and ERA is affiliated with similar groups in England, France, Germany, the Netherlands and Australia. Through these contacts, ERA members traveling overseas often receive hospitality and assistance they otherwise would have lacked. Publications of these overseas groups are available to ERA members at reduced rates, and may be subscribed to directly from National Headquarters.

OPERATING TROLLEY MUSEUMS Ever run a streetcar? If you haven't, you don't know what a thrill you're missing! And, through an absorbing new form of trolleyfan activity, you may get the chance to run a real car and feel the surge of power beneath you as you open the controller and the car picks up speed down a stretch of private right-of-way.

Several ERA divisions own streetcars, and track on which to run them. Close liaison is maintained between ERA and other independently-run museum projects.

Railfans take pride in keeping their cars in tiptop shape, for often they are the only ones remaining of types long vanished. Many hours are spent together by project members, painting and rebuilding and rewiring their equipment until it looks and runs as well as it did when it was new.

WHO MAY JOIN ERA? Requirements for membership are not strict. There is no set age limit, no arbitrary barrier. All ERA needs to admit a candidate is some assurance that he is an intelligent, responsible person, interested in electric railways, and in accord with the Association's policy of advocating the progress of electric railways. For the protection of its members, ERA does not take sides in labor or political matters, nor does it interest itself in forms of transport other than the one to which it is dedicated.

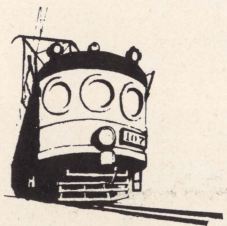
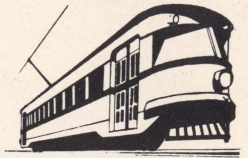
HOW DO I JOIN? It's easy. Just fill out the blank enclosed with this prospectus, giving enough information about yourself so that your application will receive favorable consideration. Enclose check or money order, payable to Electric Railroaders' Association Inc., for \$3.00—of which \$1.00 is the initiation fee, \$2.00 is for a year's dues. After the first year you pay only \$2.00 yearly.

If you should let your membership lapse, you would be reinstated at any time without having to pay another initiation fee. By paying dues for the year you missed, you could get back copies of all publications issued during that year—although, of course, you'd lose member privileges for the year you were out.

If you join a local division, of which there are eight throughout the United States, division dues are additional to national dues.

WHEN CAN I JOIN? Any time. Membership runs for the calendar year and your dues become payable January 1 of each year, but that doesn't mean you have to join on January 1. If you join at any other time—even in November or December—you get all back copies of publications issued during that year, and your membership privileges start the moment you are accepted.

So there's no need to wait ... no need to miss out on any of this absorbing activity. Send in your application now, and start finding out how much ERA membership will mean to you.



ELECTRIC RAILROADERS' ASSOCIATION, INC.

LACKAWANNA TERMINAL, HOBOKEN, NEW JERSEY

MEMBER NUMBER 1500



Dec 31 1950

Founded 1934

Electric Railroaders' Association

Membership Card of

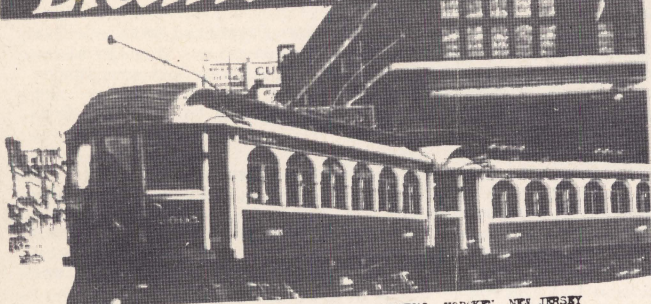
-- YOU --

H. H. Higginbotham National Secretary

ERA Headlights

April 1950

Electric Railroads



ELECTRIC RAILROADERS' ASSOCIATION INC., LACKAWANNA TERMINAL, HOBOKEN, NEW JERSEY

ORDER PLANE NO. 2

(Supersedes Order B1)

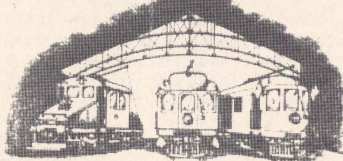
Here is the Order Blank that all ERA National Headquarters has available at a cost to all ERA members. Our system of receiving almost any item is...

INDEX FOR ERA HEADLIGHTS

VOLUME ELEVEN

JANUARY TO DECEMBER, 1949

ERA HEADLIGHTS IS PUBLISHED...



No. 1500

DATE Jan. 1, 1950

Membership Certificate

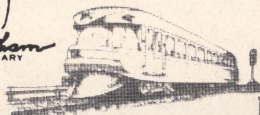
THIS CERTIFIES THAT

— You —

has been accepted as Regular member of the
ELECTRIC RAILROADERS' ASSOCIATION, INC.
and that he is in accord with the aims and principles of the organization as set forth in its original charter dated August 15, 1934.

E. J. Dwinley
PRESIDENT

H. H. Higginbotham
SECRETARY



A few of the things you get when you join ERA