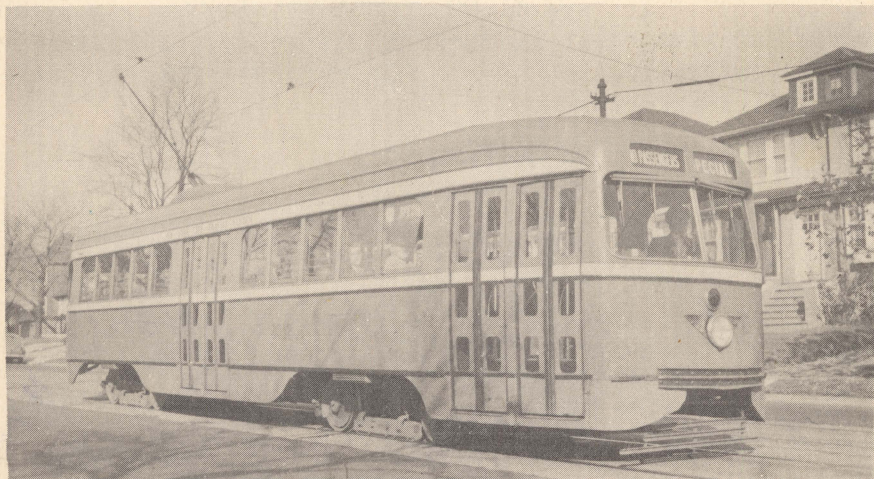


# ELECTRIC RAILROADING



## NEW YORK

by NEW YORK DIVISION, Electric Railroaders' Association



BROOKLYN P.C.C. CAR - Photo by Everett A. White

Electric Railroading in the New York metropolitan area is a fascinating avocation followed by a great many people whose interests run the gamut of the field from local street railroading, through the intricacies of rapid transit networks to the level of Class 1 railroads typified by the Pennsylvania, New York Central, New Haven, Long Island and Lackawanna operations.

The NEW YORK DIVISION of the Electric Railroaders' Association is the natural medium through which individuals who are fanciers of one or more types of electrically propelled transport may exchange ideas, information, photographs and souvenirs in the pursuit of their particular interest. These interests may be divided into twelve categories: Historical Research, Inspection Trips, Transit Improvement, Map Drawing, Model Building, Timetable Collecting, Transfer Collecting, Post Card Collecting, Entertainment, Book and Magazine Collecting, Souvenir Collecting.

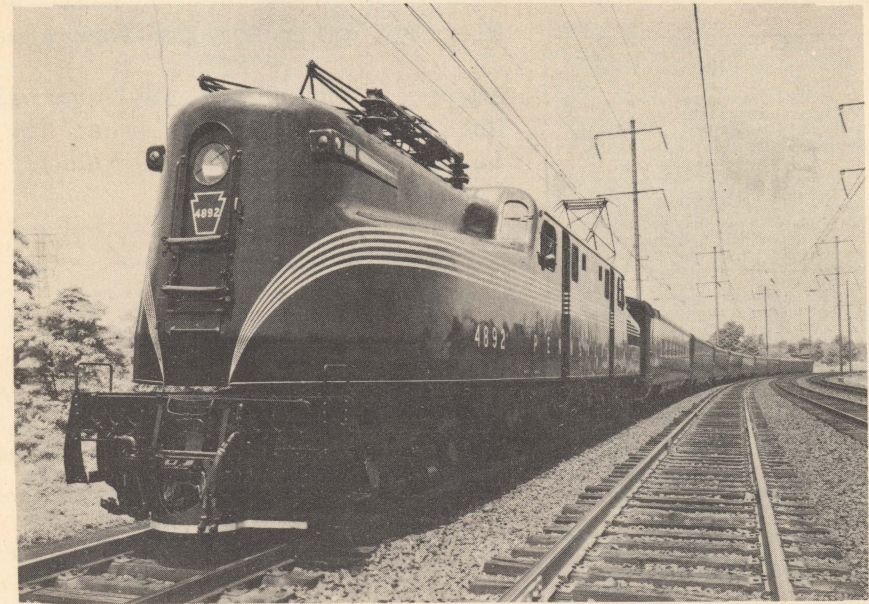
If your pursuit of the knowledge or paraphernalia pertaining to Electric Railroads falls under any of the above, YOU ARE HEREBY EXTENDED A CORDIAL INVITATION TO JOIN THE NEW YORK DIVISION OF THE ELECTRIC RAILROADERS' ASSOCIATION, Lackawanna Terminal, Hoboken, New Jersey.

**WHO MAY JOIN?** Anyone who is a member of the national body or parent organization may apply for membership in the New York Division by writing to the Division, in care of the Secretary at Hoboken, N. J.

**WHAT DOES IT COST?** Annual dues in the New York Division are \$1.00 payable in January of each year. This amount is in addition to the \$2.00 yearly dues of the national organization which publishes "HEAD-LIGHTS" and offers numerous other services.

**WHAT DO YOU GET?** From every organization you receive only in proportion to what you give! The man who gives the most he can spare of his time and energy is generally the man who finds that the organization is offering him the most in return. However, those who are unable to participate to the fullest extent of their time and ability, will find that even at a very minimum of participation, they receive more than their dollar investment from membership in the NEW YORK DIVISION of the Association. For example, we offer:

1. Regular Monthly Meetings, third Friday in each month at 8 P.M. presenting entertainment of various types, but most important of all, an opportunity to meet with other men of kindred views, who think and talk about the very things which concern you.
2. Field Activities, such as fan trips, photographic contests etc., which bring you into contact with the operating equipment, and frequently with operating personnel and officials who sometimes make it possible for you to view behind scenes operations not generally open to the public.
3. Current Events in the Electric Railway Industry, through the medium of our bulletin board, announcements at meetings, and through other channels. To the fellow who spends occasional weekends out of town, this type of information is often invaluable in aiding him to reach the right spot at the right time to ride and photograph certain equipment and choice scenic right-of-way.
4. Opportunity for Action. Every member is encouraged to write his views on electric traction to his local editor and transit officials, whenever motorizations of car lines appear imminent, because we believe the modern PCC car is the best transportation vehicle for heavily traveled routes.



GG1 Hauling the Broadway Limited - PRR Photo

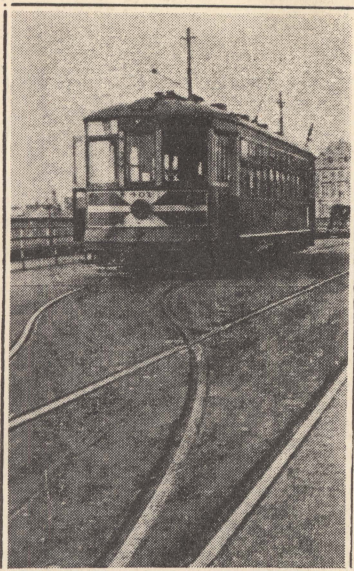
Every member is entitled to vote and otherwise participate in the formulation of policies, plans and programs, of the NEW YORK DIVISION. In conjunction with the national headquarters' staff of the E.R.A., we are always in need of men to work on our mailing list, publications and the Library. Typists, mimeograph operators, mailing experts and other clerical aides frequently prove invaluable to our diversified programs of activity.

5. Collectors' Items. Virtually every local member of the NEW YORK DIVISION E.R.A. has something to sell, give away or trade, which will undoubtedly enhance your particular collection. Moreover, the Sprague Memorial Library is open, under supervision to all Division members for research and study.

**WHO RUNS THE DIVISION?** Officers of the Division are the Chairman, Vice-Chairman, Secretary, Treasurer and two directors who comprise the Board of Directors. This Board formulates the policies and the plans of the Division, but many important matters are subsequently referred to the membership for final approval. A copy of the By-laws is furnished to each member upon request. Members who have a particular concern are urged to present it to one of the officers, either in writing or at one of the business meetings.

## Electric Railroads—New York Area

American Dock Co. (Pouch Terminal)  
 Hudson & Manhattan Railroad Co.  
 Lackawanna Railroad (DL&WRR)  
 Long Island Railroad  
 New Haven Railroad (NYNH&HRR)  
 New York Central Railroad  
 New York City Transit System  
     BMT, IRT and IND. Divisions  
     Surface Lines Division  
 New York Connecting Railroad  
 Pennsylvania Railroad  
 Public Service Coordinated Trans.  
 Queensboro Bridge Railway Co.  
 South Brooklyn Railway (NYCTS)  
 Staten Island Rapid Transit (B&O)  
 Third Avenue Transit Corporation  
 Westchester Electric Co. (TATS)  
     Mt. Vernon and New Rochelle  
 Yonkers Railroad (TATS)



DO YOU REMEMBER WHEN?  
 Richmond Railways #401  
 served the Staten Island  
 Ferry passengers (1933).

— JOIN E.R.A. NOW -- WHY DELAY? —

— NEW YORK DIVISION —

Electric Railroaders Assn.  
 Lackawanna Terminal  
 Hoboken, New Jersey

TO

**STREAMLINED  
 TRANSIT**



"MOVE PEOPLE — NOT VEHICLES"