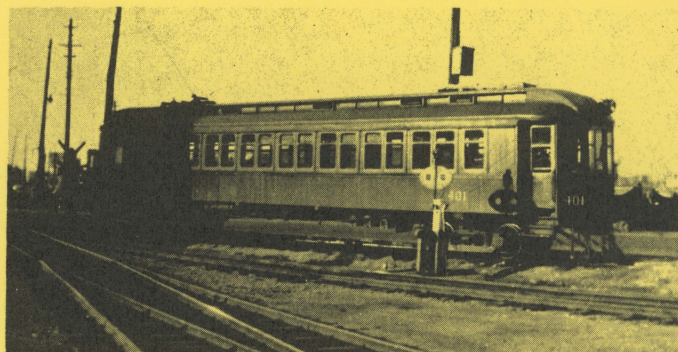


JOINT RAILWAY TRIP COMMITTEE
Proudly Announces

The First Railfan Excursion Ever Operated
over Canadian National Railways (Formerly
Q.R.L. & P.) Interurban line from Quebec
to Ste. Anne De Beaupre and St. Joachim.

Saturday, Sept. 13, 1958

Using Car No. 401 -- Fare \$2.50 Round Trip



The Joint Railway Trip Committee of the
McKinley Division Electric Railroader's
Assoc. and the Canadian Railroad Histori-
cal Assoc. of Montreal has arranged with
Canadian National Rys. to operate the first
Railfan Excursion ever held over the famous
Interurban Line running from Quebec to St.
Joachim.

Big, wood, interurban No. 401, the Old-
est trolley still in service in the United
States or Canada will be used. Stops will
be made at Montmorency Falls, Ste. Anne's
Church and St. Joachim, as well as a num-
ber of meets with regular cars. Special
Excursion Car will operate on the follow-
ing schedule.

GOING

* Leave Quebec St. Paul Terminal	1:30 PM
" Ste. Anne's Church	2:25 PM
Arrive St. Joachim	2:35 PM

RETURN

Leave St. Joachim	3:05 PM
" Ste. Anne's Church	4:15 PM
" Montmorency Falls	5:15 PM
Arrive Quebec St. Paul Terminal	5:30 PM

* Connects with Canadian Pacific and Cana-
dian National Pool Train from Montreal and
points in the United States.

All times shown are EASTERN STANDARD TIME.

Bring your Camera

Information for U.S. Juice Fans. Trolley
enthusiasts coming from distant points and
desiring to remain over night in Quebec may
secure accomodations at moderate rates by
making reservations at these hotels.

Hotel Clarendon, 57 Ste. Anne St.

Hotel St. Louis, 33 St. Louis St.

Some what higher priced accomodations are
available at the Chateau Frontenac.

United States funds are acceptable any
where in Canada

MONTREAL TROLLEY TOUR SUNDAY, SEPT. 14

For those fans desiring to spend the week
end in Canada, the Canadian Railroad Histori-
cal Assoc. has arranged a tour of some of
the remaining lines of the Montreal Trans-
portation Commission for Sun. afternoon,
September 14.

Trip will leave Youville Shops at 1:30 PM
Daylight Time and return at 5:15 PM. A car
from the M.T.C.-C.R.H.A. historical collec-
tion will be used. FARE \$2.50

TICKET INFORMATION

Tickets for either or both Trips are Avail-
able from the Following:

Jean M. Leclerc - 24 Avenue Plante, Leirs, P.Q. Canada.
Joint Quebec Railway Trip Comm. Box 22 Sta. "B" Montreal 2,
Canada.

W. Luper Hay - 130 - 35th St. N.E. Canton, Ohio
Additional information gladly furnished.

Trip under the personal supervision of Omer Lavallee, W. Luper Hay and Jean Leclerc