

ELECTRIC RAILROADERS ASSOCIATION

SUPER SPECIAL

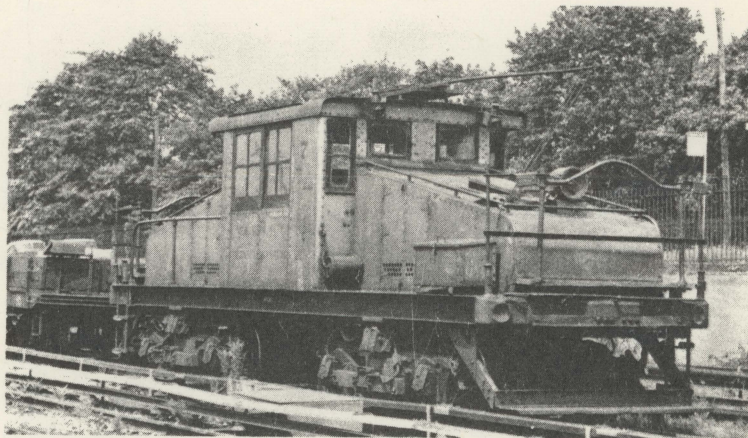


SUBWAY TOUR

Saturday, June 16, 1962

LEAVE IND 6th Avenue 34th Street 9:45 A.M.

DON'T MISS THIS



HISTORIC TRIP

TROLLEY LOCOMOTIVE WILL PULL E.R.A. SPECIAL TRAIN

For the first time in history a locomotive will draw a passenger train through the New York City Subway system. A real railroad operation! This has never been done before, and may never be done again. Famous steeple cab trolley locomotive No. 7 will pull the E.R.A. special train. This historic trip will cover all four boros over tracks of the BMT and IND, and will include tours of Concourse Yard, Jamaica Yard, and the great Coney Island Yard. Many scenic picture stops, and movie runs, will permit you to photograph the unusual train. A planned non-stop speed run from Concourse 205th Street (Bronx) to Rockaway Park will be the longest non-stop passenger run in subway history. Type "D" articulated units will be used.

Refreshments will be available aboard the special train. Ticket sales are strictly limited to the comfortable seating capacity of the train. Don't be disappointed - Use the coupon today!